

# The Road to the Future of EV Charging

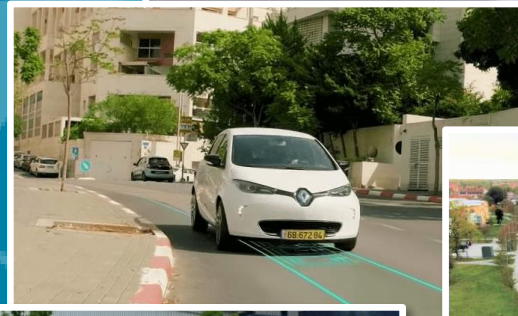
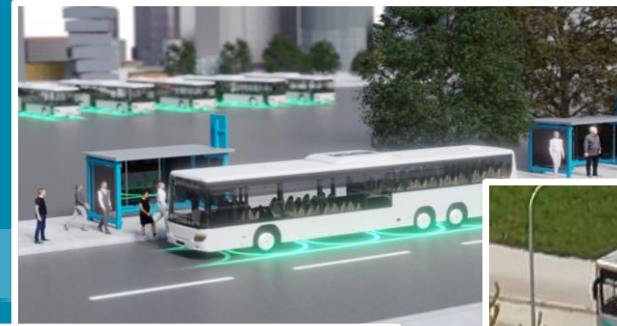
---

Investors Webinar  
Oct, 2021

---



Oren Ezer  
Co-Founder & CEO



## Legal Disclaimer

The following applies to the presentation with respect to Electreon Wireless LTD. and its subsidiaries and affiliates (collectively, the “**Company**”). In accessing the presentation, you agree to be bound by the following terms and conditions.

The presentation does not constitute or form part of, and should not be construed as an offer or the solicitation of an offer to subscribe for or purchase the securities of the Company, and nothing contained therein shall form the basis of or be relied on in connection with any contract or commitment whatsoever, nor does it constitute a recommendation regarding the securities. The information included in this presentation is a summary only and does not exhaust all of the information regarding the Company and its business, nor is it a substitute for inspection of the Periodic Report for 2020, the Company’s current reports and the presentations released thereby, as reported to the ISA via the Magna distribution site (the “**Public Information**”). The information contained in this presentation is incomplete, is subject to and does not replace the Public Information.

This presentation shall not be relied upon and shall not be construed as any representation or obligation, including with regard to the completeness or accuracy of the information included therein. The presentation may include information presented differently as to the way it has been presented in the Public Information, viz., this presentation may include data presented and/or characterized and/or edited and/or segmented differently from the way it is included in the Public Information. The presentation presents a set of data (including data that is presented in the presentation and has not yet been included in the Company's reports or have not yet been presented in the manner presented in the presentation, and which are correct to the best of the Company's knowledge as of the date on which the data is presented). This presentation includes data and information based on the Company's subjective assessments, estimates and expectations and therefore this data and information should be treated accordingly.

This presentation includes forecasts, estimates, assessments and other information pertaining to future events and/or matters, whose materialization is uncertain and is beyond the Company’s control, and which constitute forward-looking information, as defined in the Securities Law, 5728-1968. Such information may not materialize, in whole or in part, or may materialize in a manner significantly different from such forecast. Forward-looking information is based solely on the Company’s subjective assessment, based on facts and data regarding the current condition of the Company’s business and macroeconomic facts and figures, all as known to the Company at the time of preparation of this presentation. The materialization or non-materialization of the forward-looking information will be affected, inter alia, by risk factors characteristic of the Company’s activity, as well as by developments in the general environment, in market conditions and in external factors affecting the Company’s activity, including technological changes, changes in binding regulation, changes in standards, lack of funding sources, changes in competition, decrease of demand for the Company's products and their prices, failure to obtain required approvals, and other such events which cannot be estimated in advance and which are beyond the Company’s control. The Company does not undertake to update and/or change any such forecast and/or assessment to reflect events and/or circumstances postdating this presentation.

This presentation includes information that is based on external sources and studies, which have not been independently reviewed by the Company. This information shall consist as general and non-binding information. The Company's management relies on external publications as part of the Company's day-to-day management and / or setting its goals and strategy.

All numbers and figures in this presentation are approximate.

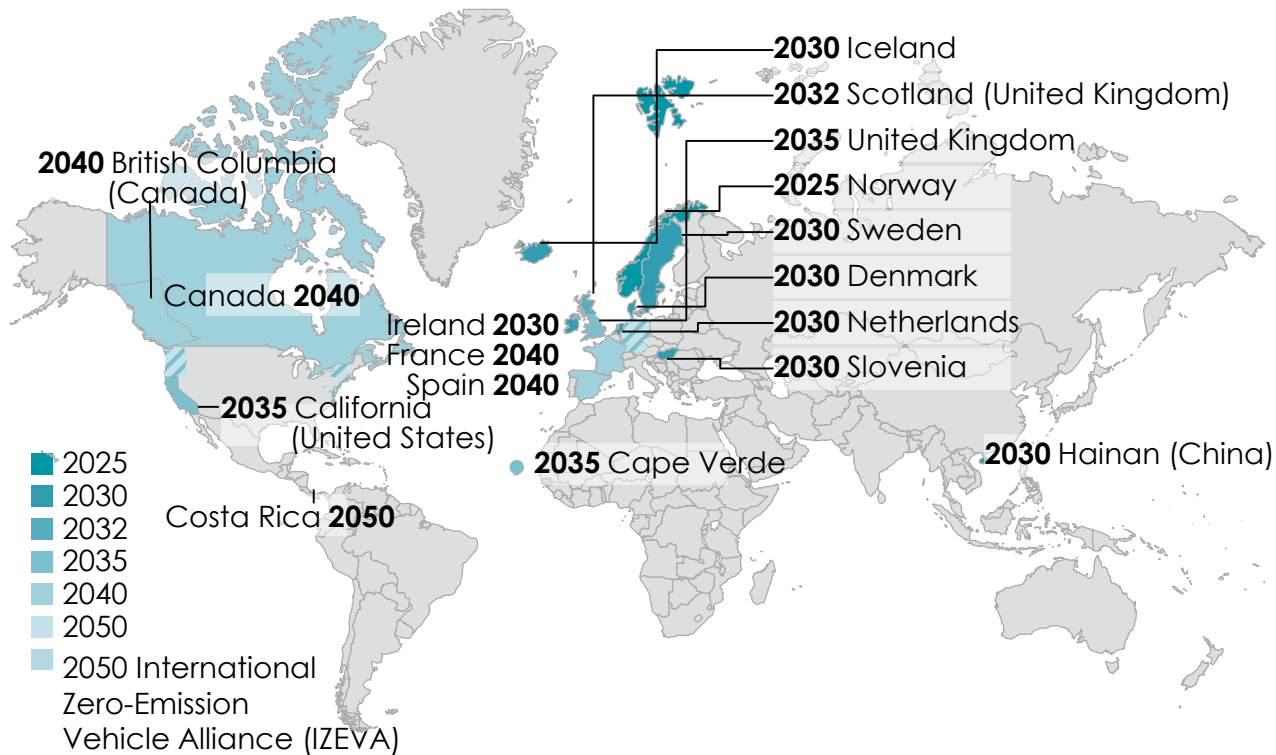
Anyone reading the presentation must read it in conjunction with the periodic report of the Company for 2020, which was published on March 29, 2021 (reference number: 2021-01-049917) and the current reports and the presentations released thereby, as reported to the ISA via the Magna distribution site.



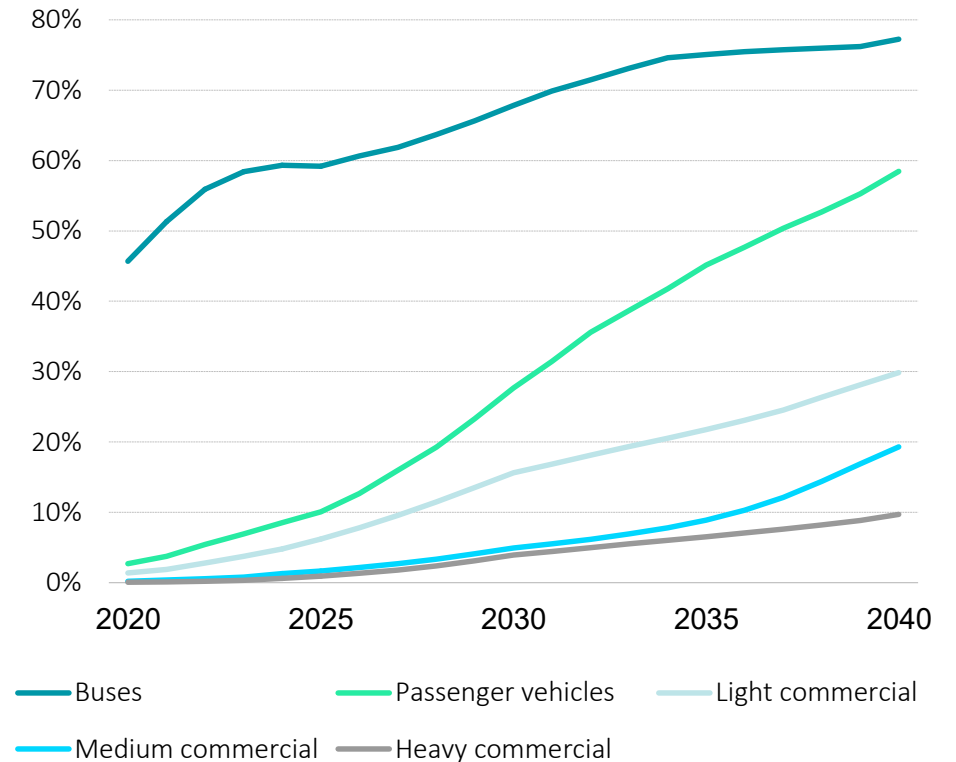
# The World is Going Electric

Global EV Sales Were Up 160% in H1, 2021

## Numerous Targets Expected to Cease Sales of New Internal Combustion Engine Cars



## New Vehicle Sales Are Increasingly Electric



## ...Driving Fleet Owners to Develop Electrification Plans

Source: The international council on clean transportation (Growing momentum: Global overview of governments targets for phasing out sales on new internal combustion engine vehicles, November 2020), BloombergNEF (Electric Vehicle Outlook 2020).

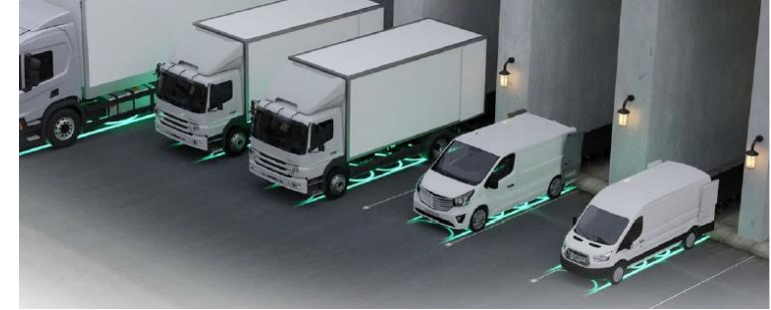
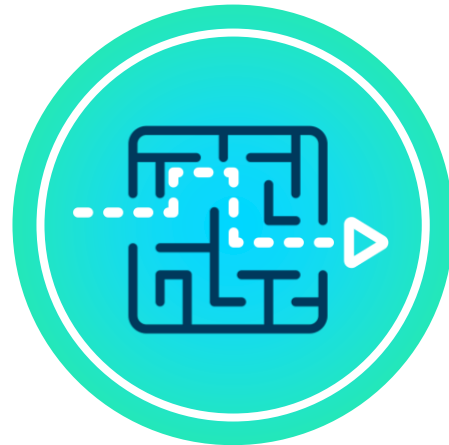




## THE PROBLEM

Existing plug-in solutions limit current fleet operations, require additional real estate allocation, are not future-proof, and result in high Total Cost of Ownership (TCO)\*

*\*Future proof – wireless charging fits AVs*



## THE SOLUTION

Move to an invisible shared charging platform tailored to the fleet's operational needs, that requires no above-ground real estate, is future-proof, lowers TCO and requires no upfront capital requirement



# The ElectReon Product Suite

Introducing highly advanced wireless charging solutions for every location



## Dynamic Charging

For vehicles in-motion along their daily routes, e.g. buses and P2P truck routes



## Semi-dynamic Charging

For slow-moving vehicles e.g. queuing taxis, entry/exit to logistics hubs and ports



## Static Charging

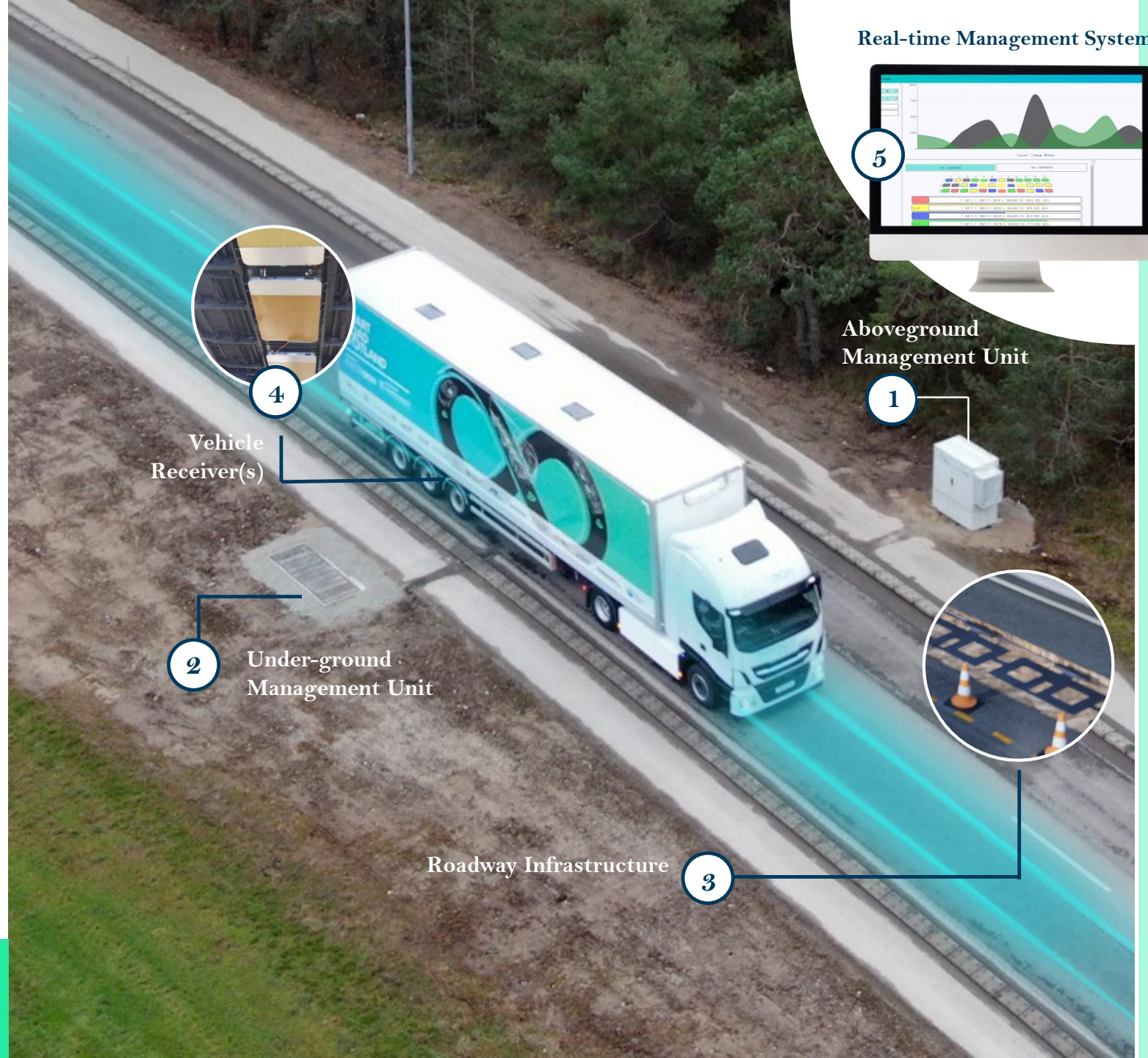
For stationary charging e.g. bus stations/terminals, loading docks and parking lots

*To the best of the company's knowledge - ElectReon is the only company to have demonstrated its wireless charging solution in real public roads*



# ElectReon's Wireless Charging System

- 1 Management Unit**  
*Above-ground or underground*
- 2** Safely transfers energy from the grid to the charging infrastructure
- 3 Roadway Infrastructure**  
*Under-road copper coils*  
Transfer power to the vehicles' receivers
- 4 Vehicle Receiver(s)**  
Transmit energy directly to battery and engine
- 5 Real-time Management System**  
The cloud system meters, monitors and manages optimal EV charging at fleet scales



Scalable architecture - supports up to 60 vehicles per Management Unit





# Electreon's Wireless Charging Offers Smooth EV Transition

Eliminating the headache of fleet electrification



Shared Platform for All EVs



No Visual Impacts with Minimum Real Estate Use



Easy Development



Simple Vehicle Integration



Battery & Vehicle Manufacturer Agnostic



Scalable & Modular Infrastructure



# Focusing on fleets that drive longer distances and consume large amounts of energy



Source: Hydrogen Scaling Up – a sustainable pathway for the global energy transition (Hydrogen Council, Nov. 2017).

1. Focusing on taxis and commercial vehicles.





# Target Market Segmentation

## SHORT-TERM

---

### Products

Stationary (static) charging stations  
Semi-dynamic (slow-moving) charging stations

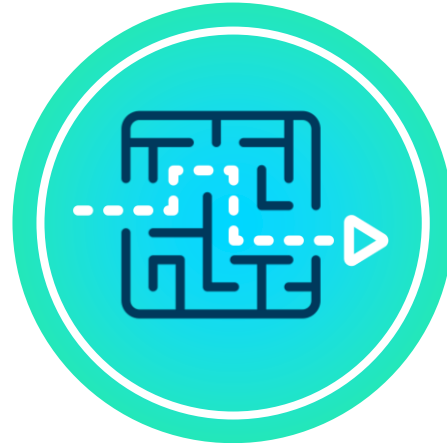
### Customer Segments

Buses – at terminals/stations  
Taxis – at taxi stands/queues  
Last-mile delivery fleets – at loading docks  
& entry/exit points

### Advantages

Private companies and land owners – quick wins  
CaaS business model – favored by clients  
Only company in field to be able to deliver a solution for every segment\*

*\* To the best of the company's knowledge - ElectReon is the only company to have demonstrated its dynamic wireless charging*



## LONGER-TERM

---

### Products

Wireless Electric Road Systems (ERS)

### Customer Segments

P2P fleets – logistics fleets, buses, then all road users

### Advantages

Only company in the world with proven wireless dynamic solution in real public roads

### Market Opportunities

#### US

One-mile wireless Michigan RFP

#### Europe

Sweden – 2,000 km by 2030, Germany – 4,000-8,000 km on autobahn network, France – plans to begin 4,000 km by 2026, Italy – phase 1 of 140 km begins Q4, 2021

# Huge Interest From OEMs to Collaborate

Integrating ElectReon's Wireless Charging Platforms



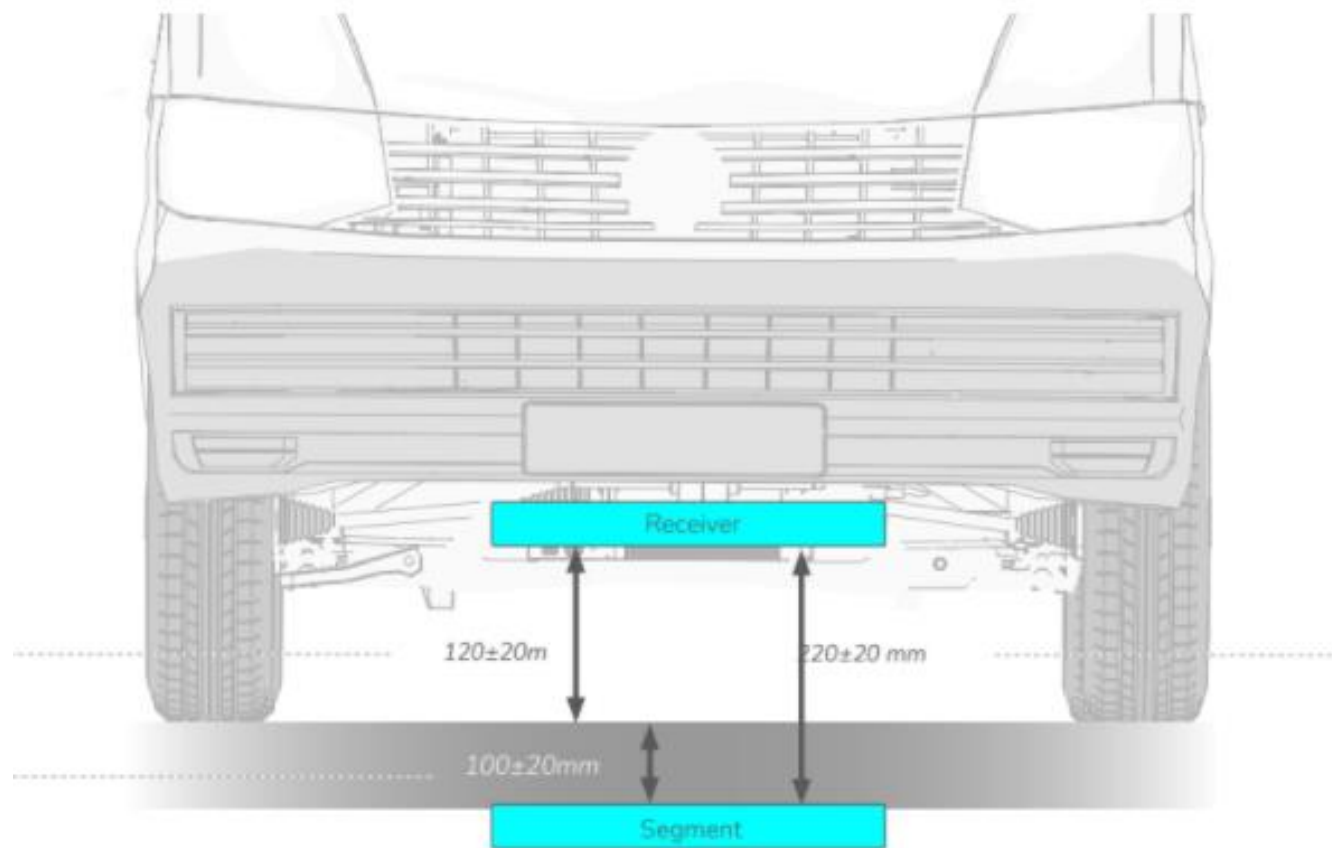
## Publically Disclosed Collaborations

- Renault – private vehicles
- Stellantis – 2 private vehicles
- Volkswagen – a van
- Iveco – a bus
- Higer – 3 buses
- Eforce – a truck



## Tier 1 Collaborations - Under NDA

- R&D vehicle integrations with tier 1 OEMs currently underway
- 4 advanced discussions with tier 1 OEMs
- Growing pipeline of OEMs who approached us



**Commercial-Sales Enabled**

R10 approval received last month

CE approvals in final stages





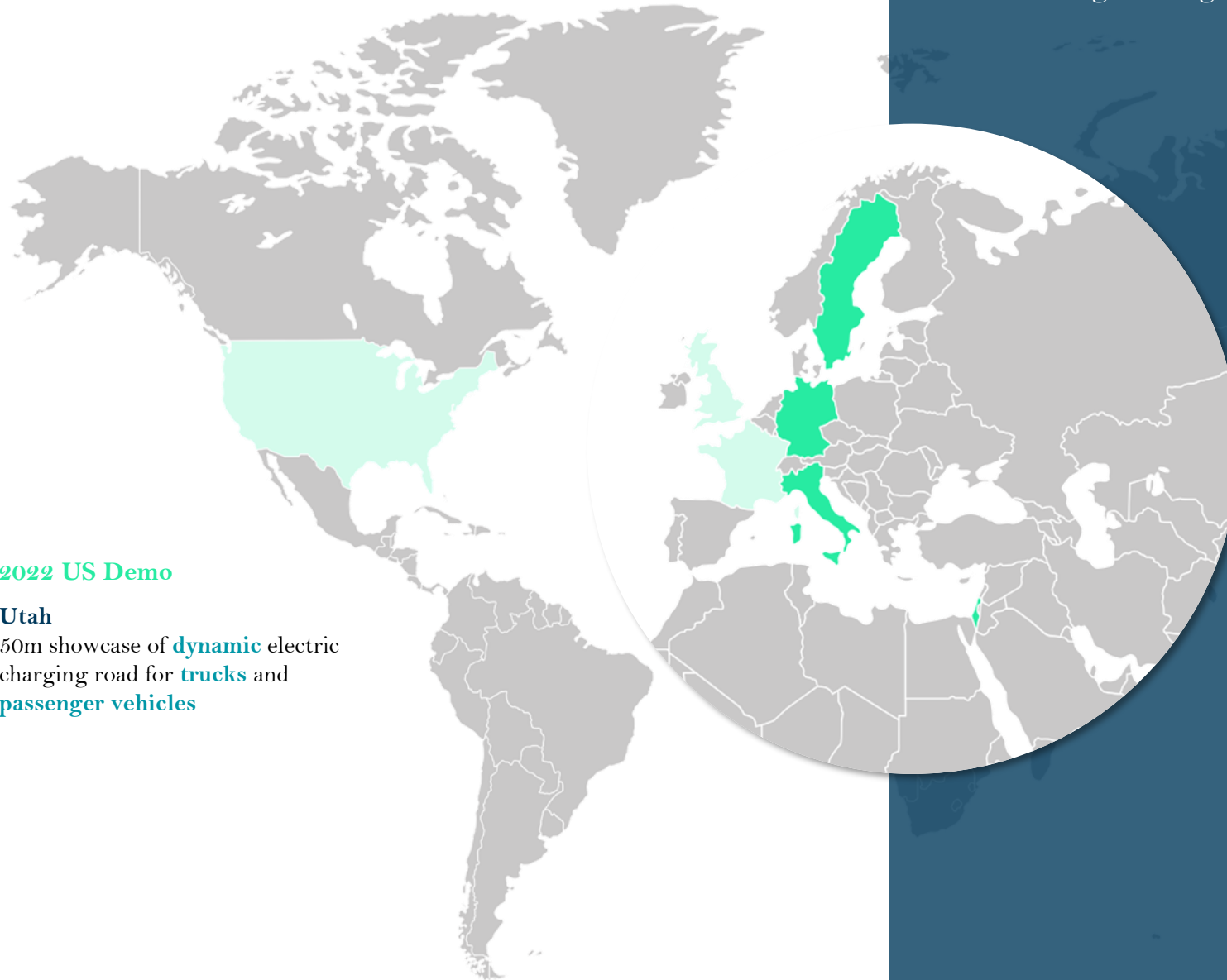
# LIVE PILOT UPDATES



# Current Target Markets Focus

# Current Pilot Project Updates

Validating offering in live public projects across Europe & MENA



## 2022 US Demo

**Utah**  
50m showcase of **dynamic** electric charging road for **trucks** and **passenger vehicles**



### Gotland Island Project

Use Case: Electric truck and bus

Status: Live and operational one-mile stretch

Near-term opportunity: Tender release for next section of ERS pilot expected by Dec 2021



### BASt Project

Use Case: Electric Van

Status: Pre-deployment planning work and vehicle integration planning

Next Steps: Deployment expected in H1, 2022



### Karlsruhe Project

Use Case: Electric bus

Status: Static charging station and 100m of dynamic at EnBW facilities deployed,

Near-term opportunity: 500m dynamic deployment



### Lombardy Project

Use Case: Electric bus and private vehicles

Product: Dynamic wireless charging

Status: Pre-deployment work underway, infrastructure shipped to site

Next Steps: Deployment and launch expected in November, 2021



### Tel Aviv Project

Use Case: Electric public bus

Status: Pilot launched

Next Steps: Planning of 200-bus charging at Tel Aviv terminals commercial project





# Company Updates



# Company's First Major Commercial Deal

Deal with Dan Bus Company will be a world-class showcase of our wireless charging technology

- 5-year project to charge 200 buses across Dan terminals in Tel Aviv and Southern District
- Phase 1 - charging 50 buses at Central Tel Aviv terminals
- Expansion of ongoing strategic collaboration with Dan Bus Company
- Validates CaaS business model – Dan will pay monthly fee of 770 USD p/bus p/month

## Other Company Updates

President Rivlin joined as company president





# The Road to the Future of EV Charging

---

Investors Webinar  
Oct, 2021

---



Oren Ezer  
Co-Founder & CEO

